

CONVENTIONAL CONTROL PANELS

J424

Expandable fire control panel.

Designed and made according to EN54 standards, the J424 is a microprocessor based control panel for medium and large applications. It has 8 zones main board and supports two J400-EXP8 expander modules, for a total of 24 zones and 504 detectors. Each detection zone is equipped with an alarm-repeat output for selective alarm management in the event of fire.

The control panel has supervised and silenceable alarm outputs for the control of the self-powered sirens, piezoelectric sirens, fire bells, flashers, telephone diallers, etc.

This easy-to-use control panel is protected by a lockable frontplate which allows operational access to authorized personnel only.

The J424 control panel is also available with a backlit display, which shows all the information regarding the control panel status. The optional Software in Windows™ environment, allows full systems management of events memory, files, reset and all the programmable functions provided by the control panel.

J424

- 8 controlled, balanced, bypassable input zones expandable to 24 by means of two 8 zone expanders
- Optional backlit display
- RS485 bus
- Power supply: 230 Vac ±10%
 - 27.6 Vdc 2.5 A switching supply/battery-charger
 - Compartment for two 12 Vdc 17 Ah batteries
 - Dimensions (wxhxd): 422x502x116 mm
 - Weight (without batteries): max. 8.5 Kg

FEATURES

- Conforms with EN54
- Up to 21 devices can be connected to each zone: conventional fire detectors, alarm buttons, gas detectors
- Gas zone compatible with 4 – 20 mA gas detectors
- One alarm-repeat output (open collector) for each input zone
- Manual call point recognition
- Signals missing detectors
- 2 supervised, silenceable, bypassable 24 V alarm output for the activation of piezoelectric sirens, fire bells and flashers
- Silenceable fault-warning output for the activation of signalling and auxiliary devices
- Supervised fire output for telephone dialler activation
- Programmable open-collector output
- Dry contact alarm-relay for the activation of auxiliary devices
- Day/Night mode
- Alarm verification time
- Programmable restoral and reset times
- Programmable from PC or keypad
- 50 event log viewed via PC
- Alarm/fault memory activated until next reset
- Command for silencing sirens
- Keypad commands require key or pin code



ACCESSORIES



J400-LCD
Display module

TECHNICAL FEATURES

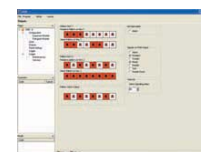
Backlit LCD display module, two lines with 16 characters per line. Main text regarding the system's status and it is equipped with 6 scroll keys.



PCJ400BRIDGE
Serial interface

TECHNICAL FEATURES

Enables PC communication with J400 series fire control panels via RS485 bus. Receives data from zones and peripherals and transmits commands to the system (bypass, unby-pass, etc). Configured as J400-LCD module, maximum 4 modules per system (if J400-LCD module is needed, only 3 PCJ400 Bridge interfaces can be installed).



Management software

TECHNICAL FEATURES

User-friendly Windows software for a quick and easy way to program the control panel, with event logger and print-out functions.

INCLUDED IN BENTEL FIRE SUITE
pag.32



J400-REP
Repeater panel

TECHNICAL FEATURES

- 4 wire connection to the panel (power supply included)
- The repeater panel may be installed up to 1.000 m from the control panel
- Displays all audible and visual signalling
- Control panel management
- Dimensions (wxhxd): 280x320x40 mm
- Weight: 2.260 Kg



J400-EXT
Extinguisher module with microprocessor control

TECHNICAL FEATURES

- Output for electro-valves controlled by logic (AND/OR) between the status of the control panel zones
- Programmable extinguishment delay
- Output signals: extinguishment delay, extinguishment and released
- Input for the forced activation of the extinguishment devices - Input for the pressure switch
- Fault signalling on pressure-switch supply line
- Fault signalling on input lines
- Bypass of extinguishment devices in the event of false alarm
- Inputs for selecting manual or automatic mode, extinguishment inhibit and power supply supervision



J400EXP8
8 zones expander module for J424 panels

TECHNICAL FEATURES

- 8 balanced, bypassable fire zones

J408

8 zone fire control panel

Designed and made according to EN54 standards, the J408 is a microprocessor based control panel for small to medium applications. It has 8 zones, each supports up to 21 detectors, for a maximum of 168 detectors. Each detection zone has an alarm-repeat output for selective management in the event of fire. The control panel has supervised, silenceable alarm-outputs for self-powered sirens, piezoelectric sirens, fire bells, flashers, telephone diallers, etc. This easy-to-use control panel is protected by a lockable frontplate which allows operational access to authorized personnel only.

The optional Software in Windows™ environment, allows full systems management of events memory, files, reset and all the programmable functions provided by the control panel.

J408-8 / J408-4 / J408-2

- 8 controlled, balanced, bypassable input zones (J408-2 has 2 zones, J408-4 has 4 zones)
- Power supply: 230 Vac ±10%
- RS485 bus
- 27.6 Vdc 1.5 A switching supply/battery-charger
- Compartment for two 12 V 7 Ah batteries
- Dimensions (wxhxd): 354x280x100 mm
- Weight (without batteries): max. 4,5 Kg



ACCESSORIES



J400-EXT

Extinguisher module with microprocessor control

TECHNICAL FEATURES

- Output for electro-valves controlled by logic (AND/OR) between the status of the control panel zones
- Programmable extinguishment delay
- Output signals: extinguishment delay, extinguishment and released
- Input for the forced activation of the extinguishment devices - Input for the pressure switch
- Fault signalling on pressure-switch supply line
- Fault signalling on input lines
- Bypass of extinguishment devices in the event of false alarm
- Inputs for selecting manual or automatic mode, extinguishment inhibit and power supply supervision



J400-REP

Repeater panel

TECHNICAL FEATURES

- 4 wire connection to the panel (power supply included)
- The repeater panel may be installed up to 1.000 m from the control panel
- Displays all audible and visual signalling
- Control panel management
- Dimensions (wxhxd): 280x320x40 mm
- Weight: 2.260 Kg

FEATURES

- Conforms with EN54
- Up to 21 devices can be connected to each zone: conventional fire detectors, alarm buttons, gas detectors
- Gas zone compatible with 4 – 20 mA gas detectors
- One alarm-repeat output (open collector) for each input zone
- Manual call point recognition
- Signals missing detectors
- 2 supervised, silenceable, bypassable 24 V alarm output for the activation of piezoelectric sirens, fire bells and flashers
- Silenceable fault-warning output for the activation of signalling and auxiliary devices
- Supervised fire output for telephone dialler activation
- Programmable open-collector output
- Dry contact alarm-relay for the activation of auxiliary devices
- Day/Night mode
- Alarm verification time
- Programmable restoral and reset times
- Programmable from PC or keypad
- 50 event log viewed via PC
- Alarm/fault memory activated until next reset
- Command for silencing sirens
- Keypad commands require key or pin code

ORDER CODES

J408-2	2 zone fire control panel
J408-4	4 zone fire control panel
J408-8	8 zone fire control panel
J400-REP	Repeater panel
PCJ400BRIDGE	Serial interface
J400-EXT	Extinguisher module with microprocessor control



PCJ400BRIDGE

Serial interface

TECHNICAL FEATURES

Enables PC communication with J400 series fire control panels via RS485 bus. Receives data from zones and peripherals and transmits commands to the system (bypass, unby-pass, etc). Configured as J400-LCD module, maximum 4 modules per system (if J400-LCD module is need, only 3 PCJ400 Bridge interfaces can be installed).



Management software

TECHNICAL FEATURES

User-friendly Windows software for a quick and easy way to program the Control Panel, with event logger and print-out functions.

INCLUDED IN BENTEL FIRE SUITE
pag. 32